

Street Health Outreach and Wellness (SHOW)

NYPWA Annual
Winter
Conference

January 24th,
2024



**Bringing Medicine and Services to the Street:
Connecting the Unsheltered Homeless with Care**



Agenda

- Street Medicine: Core beliefs and mission
- History of medical outreach
- Goals of outreach
- Team roles and dynamics
- What comes next



What is Street Medicine?

A 'Classroom without Walls'

- 1992; Dr. Jim Withers
- Enlisted the help of an individual, formerly homeless, who became his liaison and guide with the community
- Noticed the population was struggling with serious physical illness but because of internal/external factors, lacked access to traditional means of health and medical care
- Barriers to treatment
- Care model emphasizes Compassion, Creativity, and Collaboration

'Reality Based Medicine'



Mission of Street Medicine

Locate and inform the homeless and unsheltered of the availability of healthcare and social services

- Identify and reduce barriers to care/increase utilization of services
- Integrate primary care with substance use/mental health treatment
- Provide team oriented case management
- Establish and maintain collaborative linkages with other programs



Core Beliefs and Values

- Go to the People - meeting people in their own space and terms
- Solidarity - stand with them...they are human beings with their own stories
- Authenticity = Be genuine, transparent, and honest
- Transformative Disruption - the need for justice and health equity for us all
- Streets as a Classroom - learning best from those we serve
- Healing Community - helping marginalized communities can lend us to feeling marginalized as well



How NYC SHOW Started

- Medical teams in mobile Covid vaccination sites were deployed to communities strongly impacted by Covid with limited access to vaccine sites.
- Medical teams saw continued need to continue outreach to vulnerable communities.



Our Patient Criteria

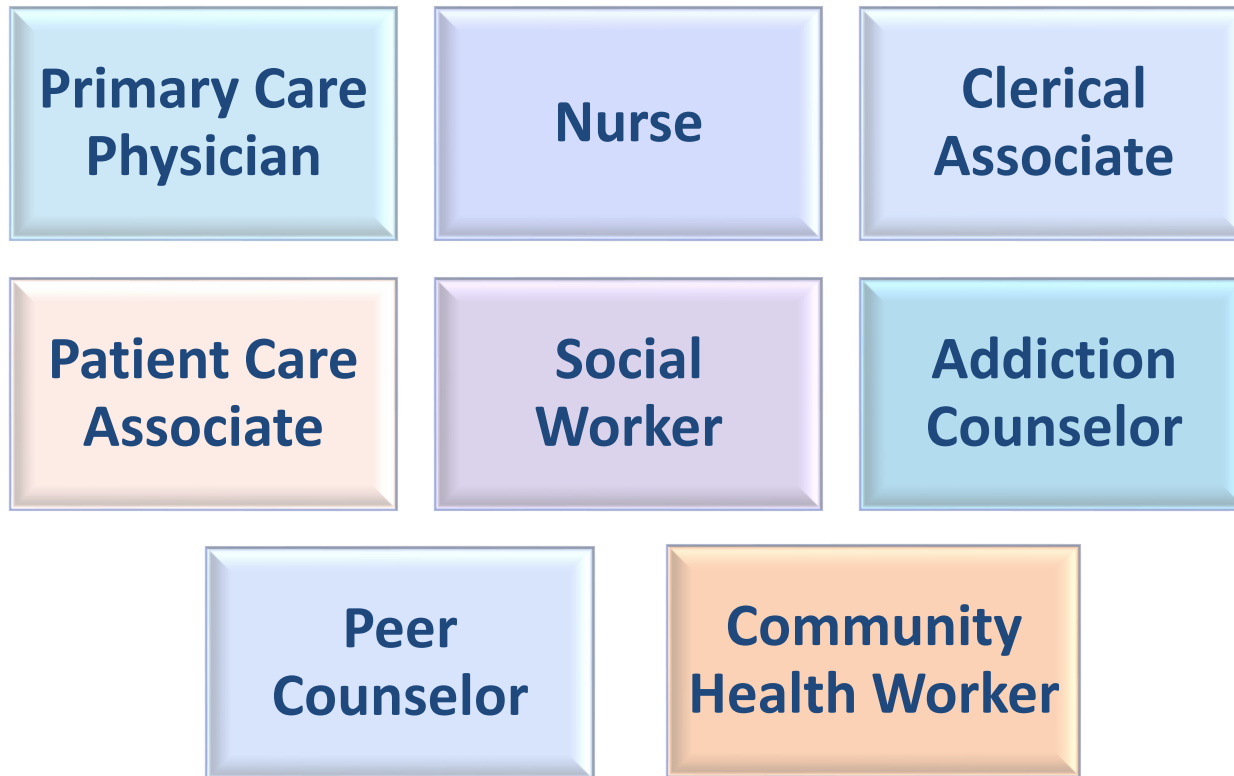
- Unsheltered, street homeless, or unstably housed
 - Extensive Department of Homeless Services involvement
- Medical services provided to 18 years old and up
- Symptoms of Substance Use Disorder and Mental Health
- Lack of access to resources and support systems
- Criminal justice involvement



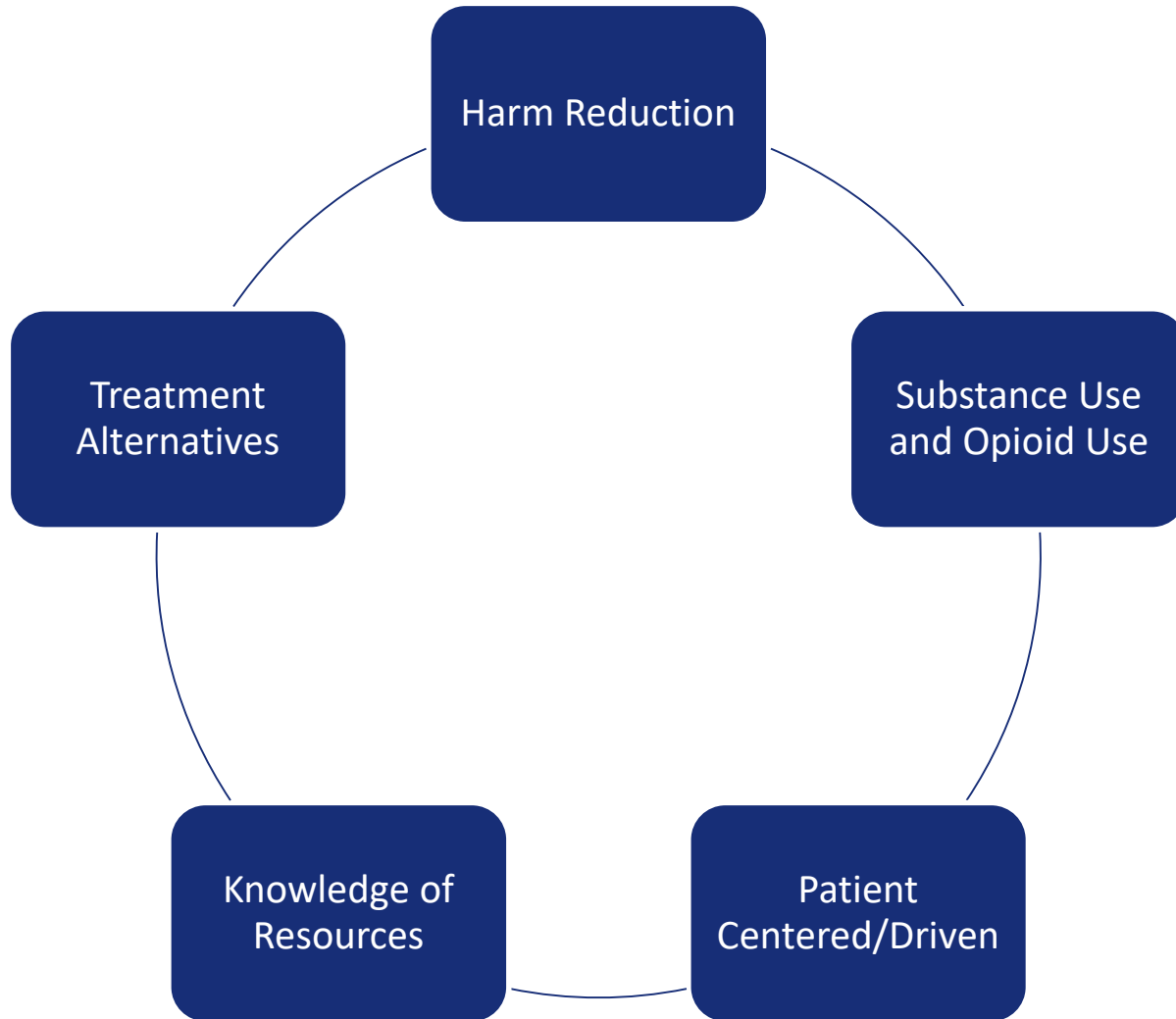
Inside the Van



Interdisciplinary Team



Team Core Competencies



Roving → Services

Teams 'rove', canvassing new and existing areas, offering tangible services

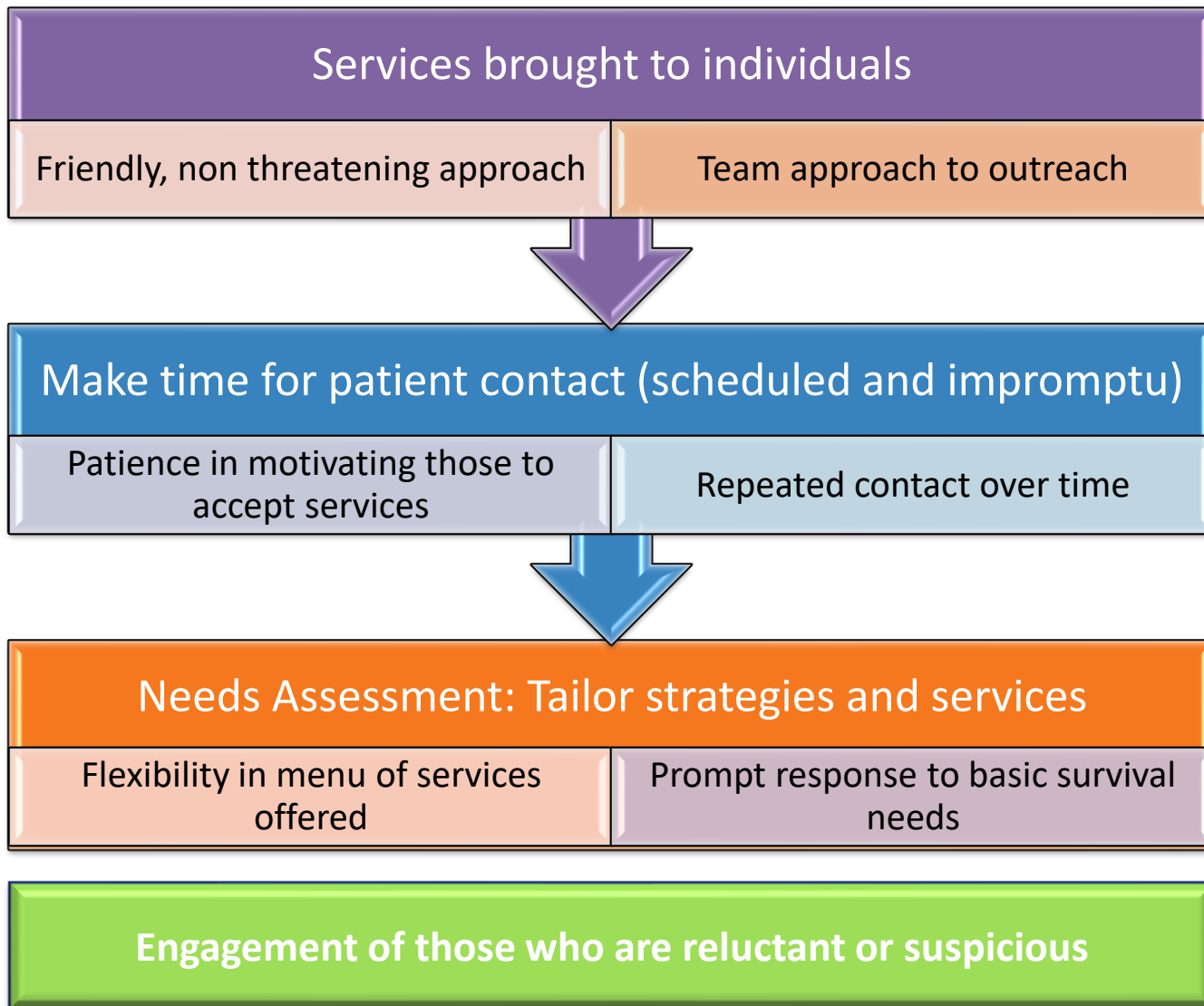
Immediate medical care (both in the community and on the mobile unit)

Referrals to social services and information about area resources based on identified needs

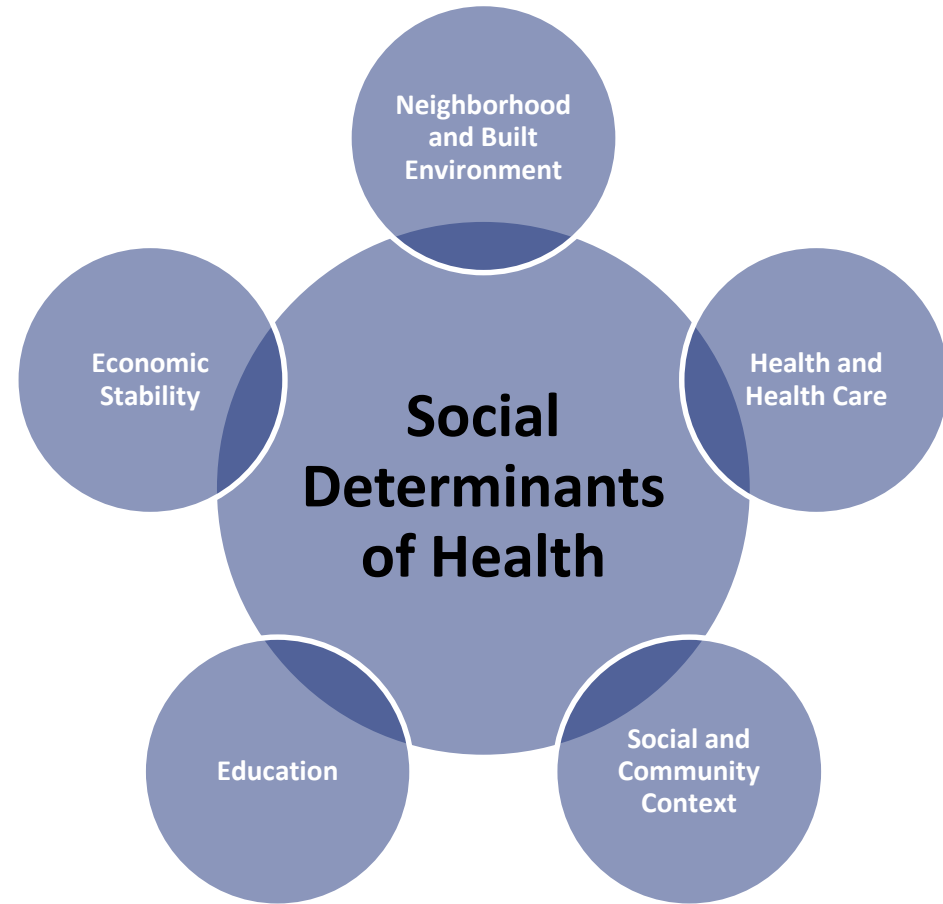
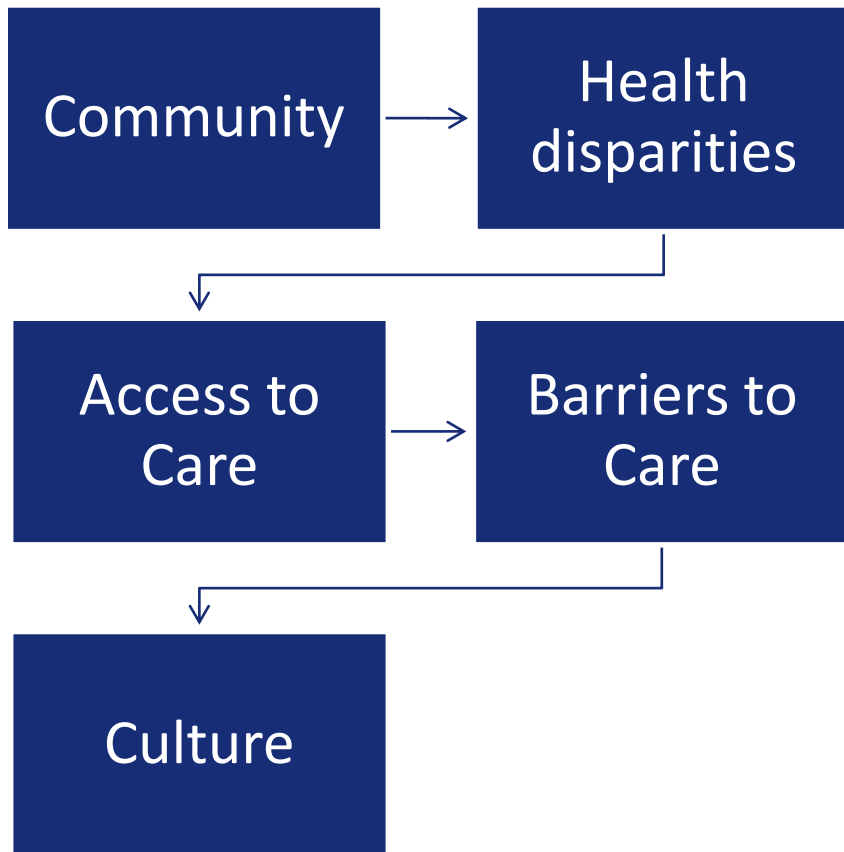
Direct linkages and staff accompaniment of patient to clinics, appointments, or access to emergency care

Distribution of hygiene/food kits and Naloxone kits which include Fentanyl and Xylazine test strips

Outreach Principles



Utilization of Social Determinants of Health (SDOH)



Extension of Hospital Clinic

- Provide Flu and Covid Vaccinations
- Wound care
- Prescribe medication
- Linkages to treatment
- Referrals to long term care facilities
- Coordinate patient care
- Many team members operate out of the 'Primary Care Safety Net', a small clinic designed to treat unstably housed individuals.



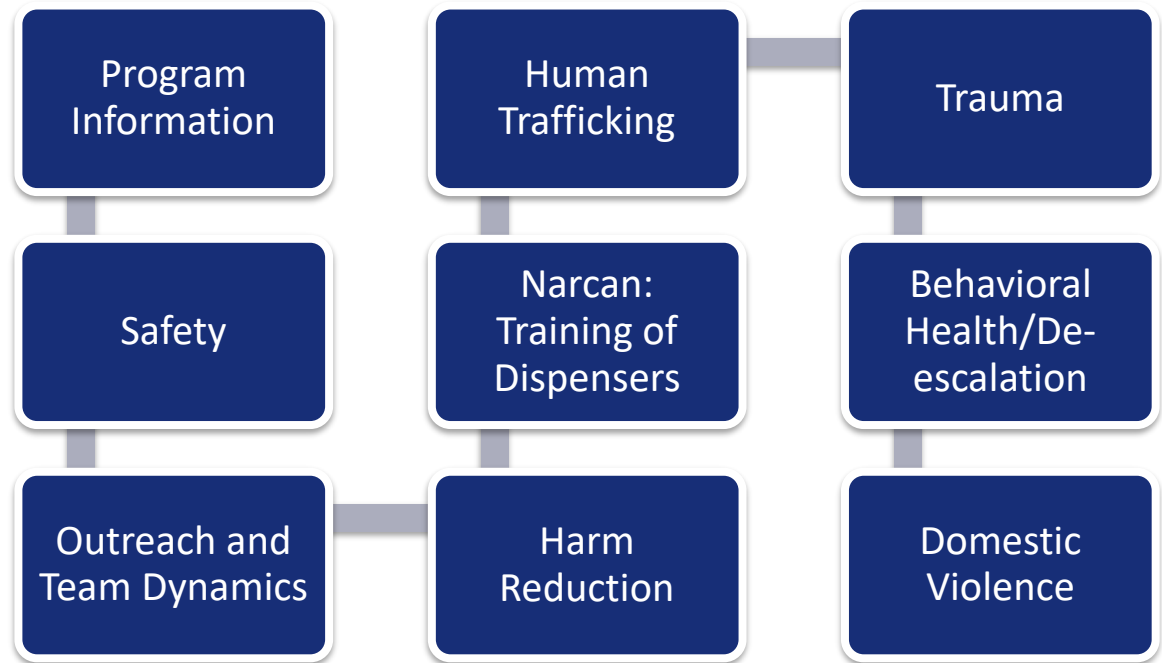
Connection to Safety Net Clinics

- Most vulnerable population are people who are unstably housed while dealing with substance use, mental health, and/or medical problems.
- These patients rarely received regular primary or preventive care, but often use the emergency department or hospital admission when conditions become irreparable or life-threatening.
- The aim is to provide well coordinated, regularly-available, flexible medical care and social support for this group of highly vulnerable people.



Team Trainings and Support

Trainings



Team Support

Team Debriefs

Daily Huddles

Case Conferencing

Supervision



Affiliations and Locations

Facility	Operating Schedule	Start Date	Location
Bellevue Hospital	5 days a week	January 2023	Lower East Side- Manhattan
Woodhull Hospital	4 days a week	March 2023	Bedford Stuyvesant/Bushwick - Brooklyn
Elmhurst Hospital	3 days a week	May 2023	Corona and Elmhurst- Queens
Bellevue Hospital	4 days a week	September 2023	Harlem- Manhattan
Lincoln Hospital	5 days a week	December 2023	Mott Haven- Bronx

Van locations are based on NYC Overdose rate data and input from existing street outreach teams



Importance of Taking Care of Self

What is Wellness?

Wellness is defined as an active pursuit of new life skills and becoming aware of and making conscious choices toward a balanced and fulfilling lifestyle.



Future Goals

- Increase Medical Services
- Solidify Additional Partnerships
- Increase Van Productivity
- Provide Additional Trainings
- Re-Visit Staffing Models
- Focus on Staff Retention and Well Being



Shlomit Levy, LCSW

***Behavioral Health Director of Street Health
Outreach and Wellness (SHOW)***

Levys14@nychhc.org



Thank you for your time!



Any Questions?

